



VIDA IS AN APPLICATION FOR EARLY DETECTION OF BREAST CANCER

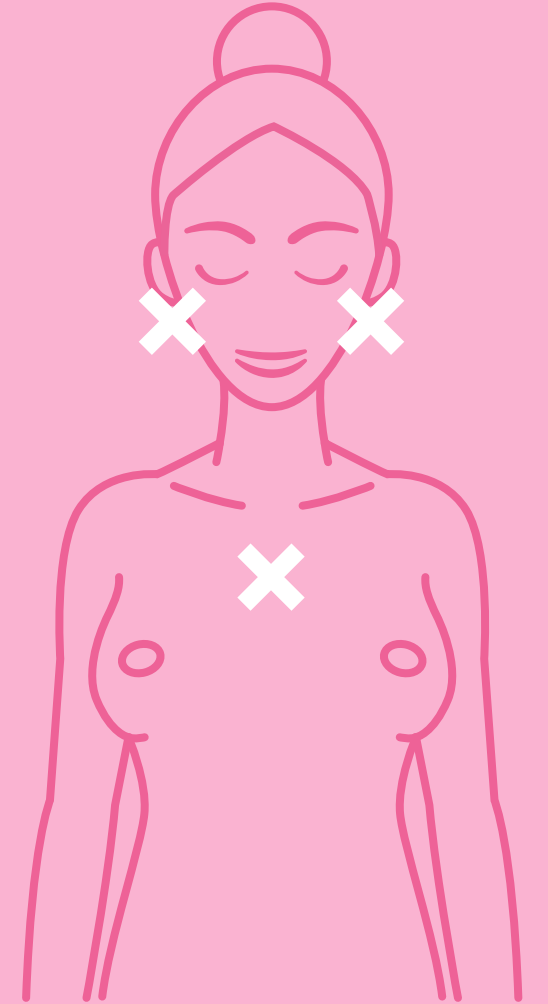
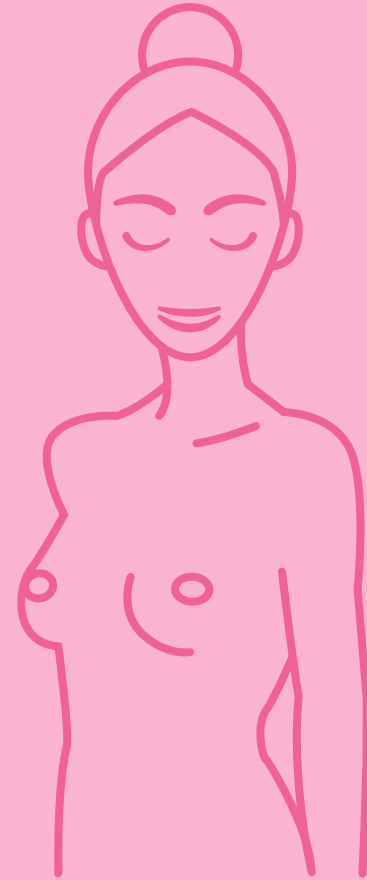
A FEW STEPS CAN SAVE YOUR LIFE, PREVENTION IS KEY TO EFFECTIVE CANCER TREATMENT



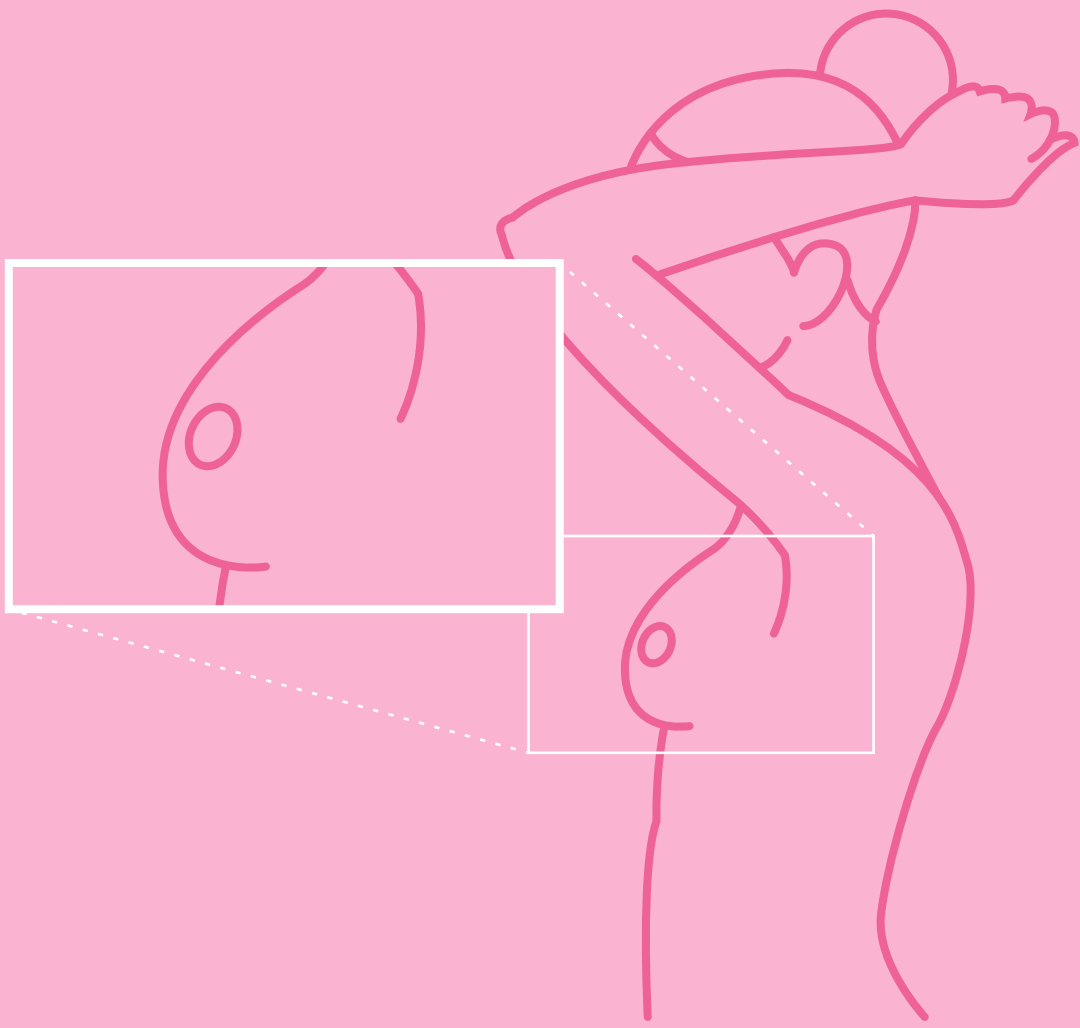
POSITION THE CELL PHONE OR TABLET IN FRONT OF THE PATIENT



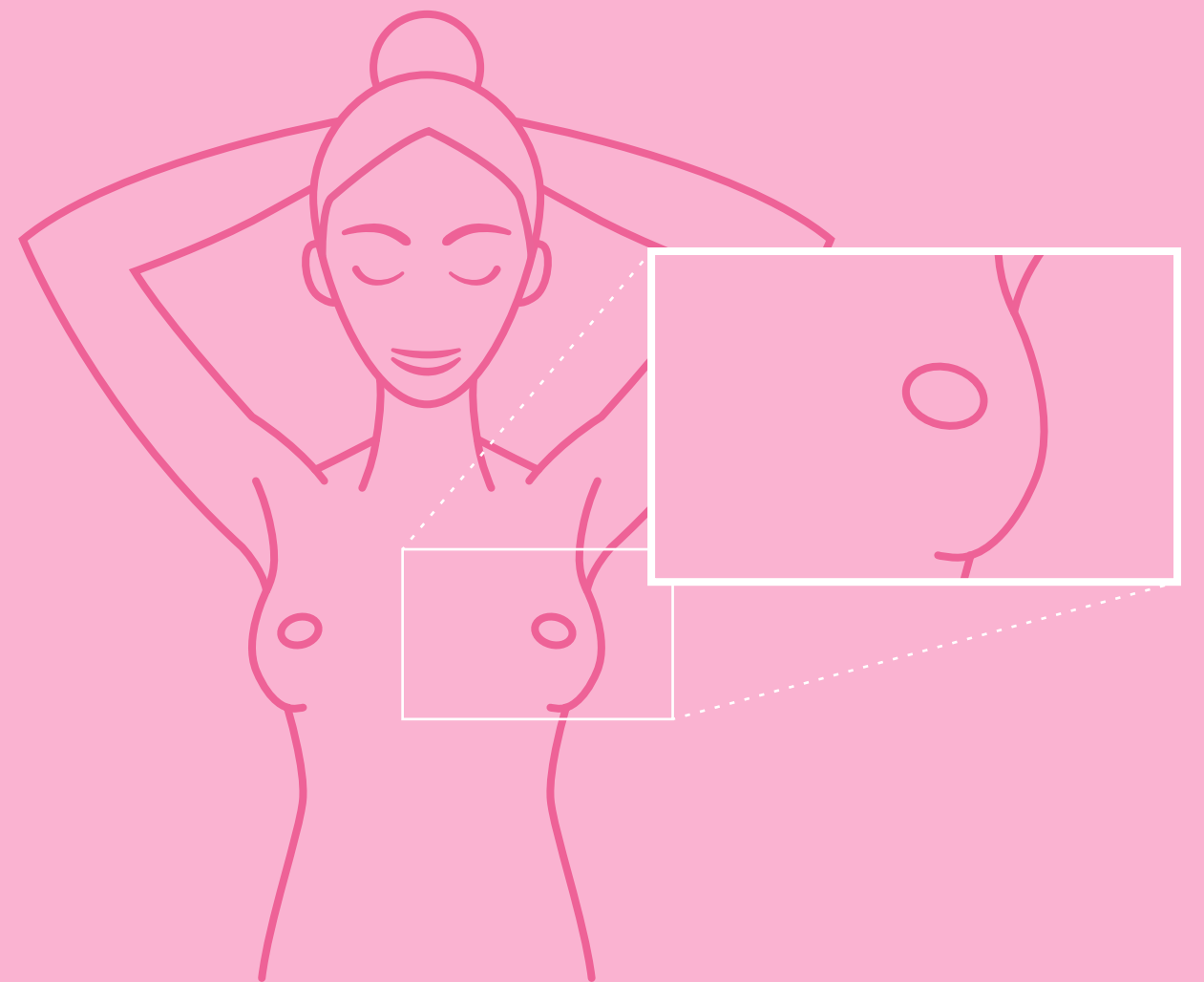
LOCATE APPROXIMATELY 1 MT. AWAY FROM THE PATIENT



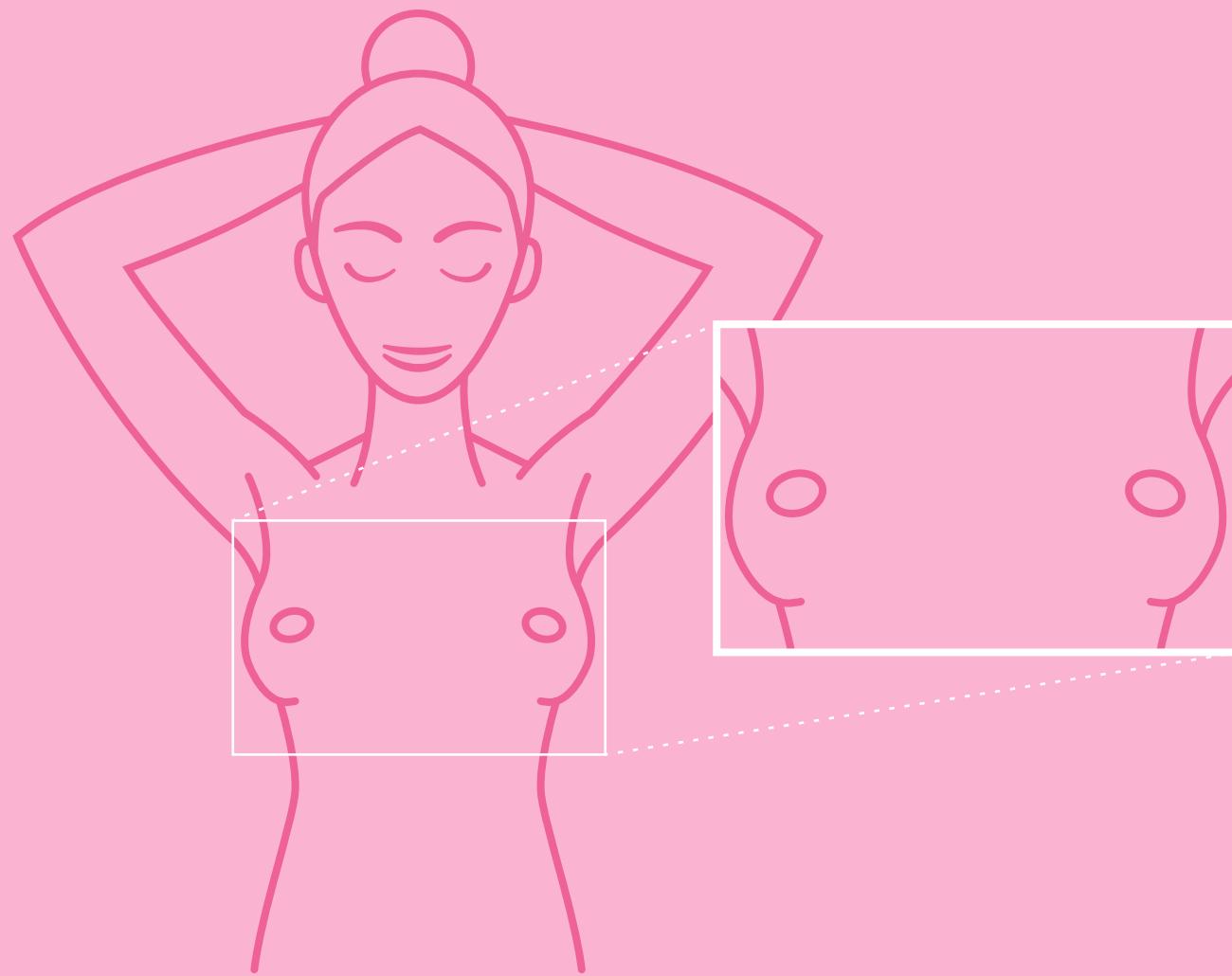
DO NOT WEAR EARRINGS, NECKLACES OR OTHER ITEMS THAT MAY INTERFERE



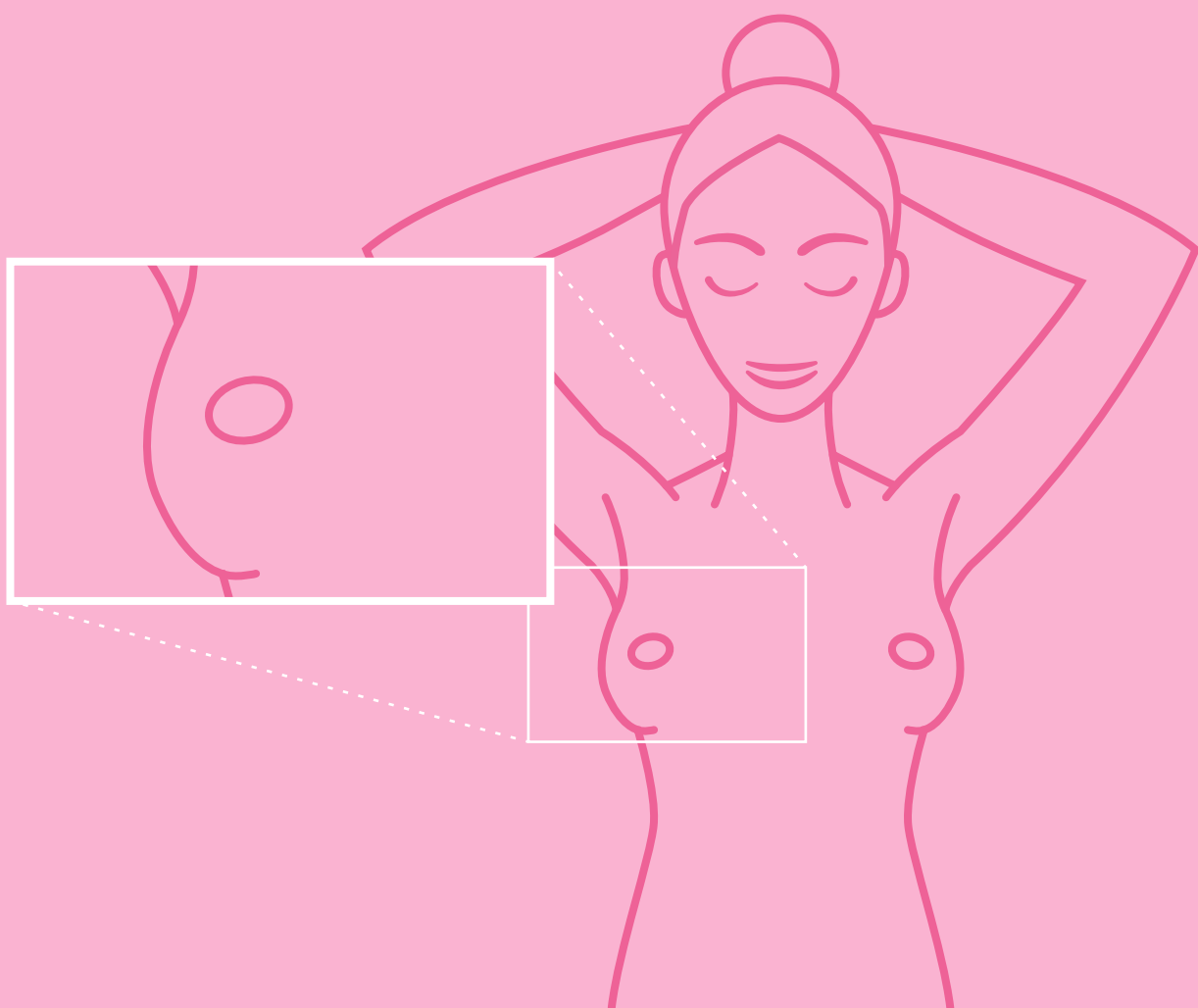
TAKE 1 LEFT CHEST FROM SIDE



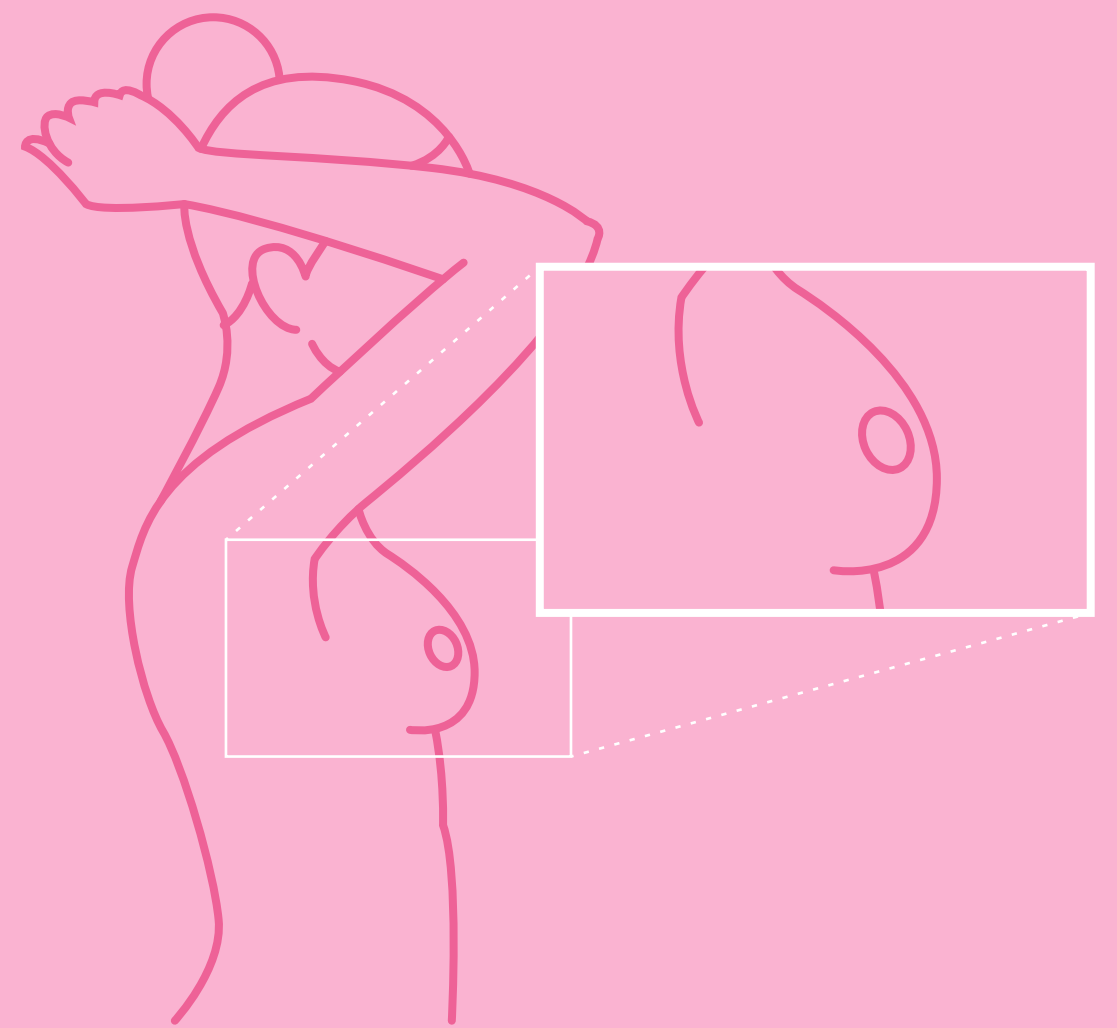
TAKE 2 LEFT CHEST FROM FRONT



TAKE 3 BOTH BREASTS IN FRONT



TAKE 4 RIGHT CHEST FROM FRONT



TAKE 5 RIGHT CHEST FROM SIDE